

The PrimeCheck App Case Study: Test Driver Implementation & Performance

Douglas C. Schmidt

d.schmidt@vanderbilt.edu

www.dre.vanderbilt.edu/~schmidt

Professor of Computer Science

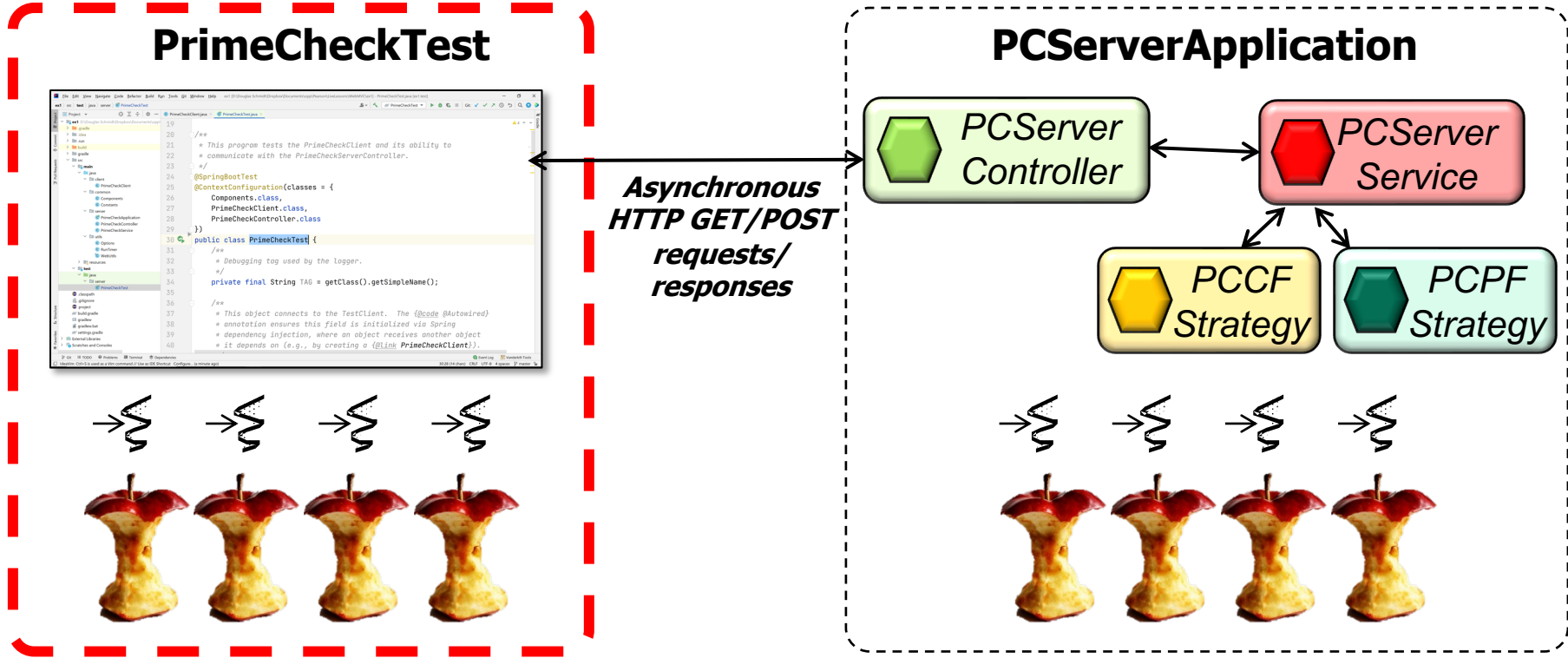
**Institute for Software
Integrated Systems**

**Vanderbilt University
Nashville, Tennessee, USA**



Learning Objectives in this Part of the Lesson

- Understand the implementation of a test driver program that runs the PCClient* classes & measures the performance of various methods



Implementing the PrimeCheckTest Driver

Implementing the PrimeCheckTest Driver

The screenshot shows an IDE window with the following components:

- Project Structure (Left):** A tree view showing the project layout. The 'test' directory is expanded, showing 'java' > 'primechecker' > 'client' > 'PrimeCheckTest'. Other packages like 'common', 'server', and 'resources' are also visible.
- Code Editor (Center):** Displays the source code for `PrimeCheckTest.java`. The code is as follows:

```
35 public class PrimeCheckTest {
36     /**
37      * These fields connect {@link PrimeCheckTest} to the {@code
38      * PCClientFlux} and {@code PCClientParallelFlux}. The
39      * {@code @Autowired} annotation ensures this field is initialized
40      * via Spring dependency injection, where an object receives
41      * another object it depends on.
42      */
43     @Autowired
44     private PCClientParallelFlux testClientPF;
45
46     @Autowired
47     private PCClientConcurrentFlux testClientCF;
48
49     /**
50      * Emulate the "command-line" arguments for the tests.
51      */
52     private final String[] mArgv = new String[]{
53         "-d",
54         "-f100" // Disable debugging messages
55     };
56 }
```
- IDE Interface (Right and Bottom):** Includes a toolbar with icons for Database, Gradle, Device Manager, and Notifications. The bottom status bar shows the daemon started successfully (8 minutes ago), the current time (95:31), and encoding (CRLF, UTF-8, 4 spaces).

See github.com/douglasraigschmidt/LiveLessons/tree/master/WebFlux/ex2

End of the PrimeCheck App Case Study: Test Driver