

# Implementing the RSocket Shakespeare Quotes Case Study App Test Driver

**Douglas C. Schmidt**

**[d.schmidt@vanderbilt.edu](mailto:d.schmidt@vanderbilt.edu)**

**[www.dre.vanderbilt.edu/~schmidt](http://www.dre.vanderbilt.edu/~schmidt)**

**Professor of Computer Science**

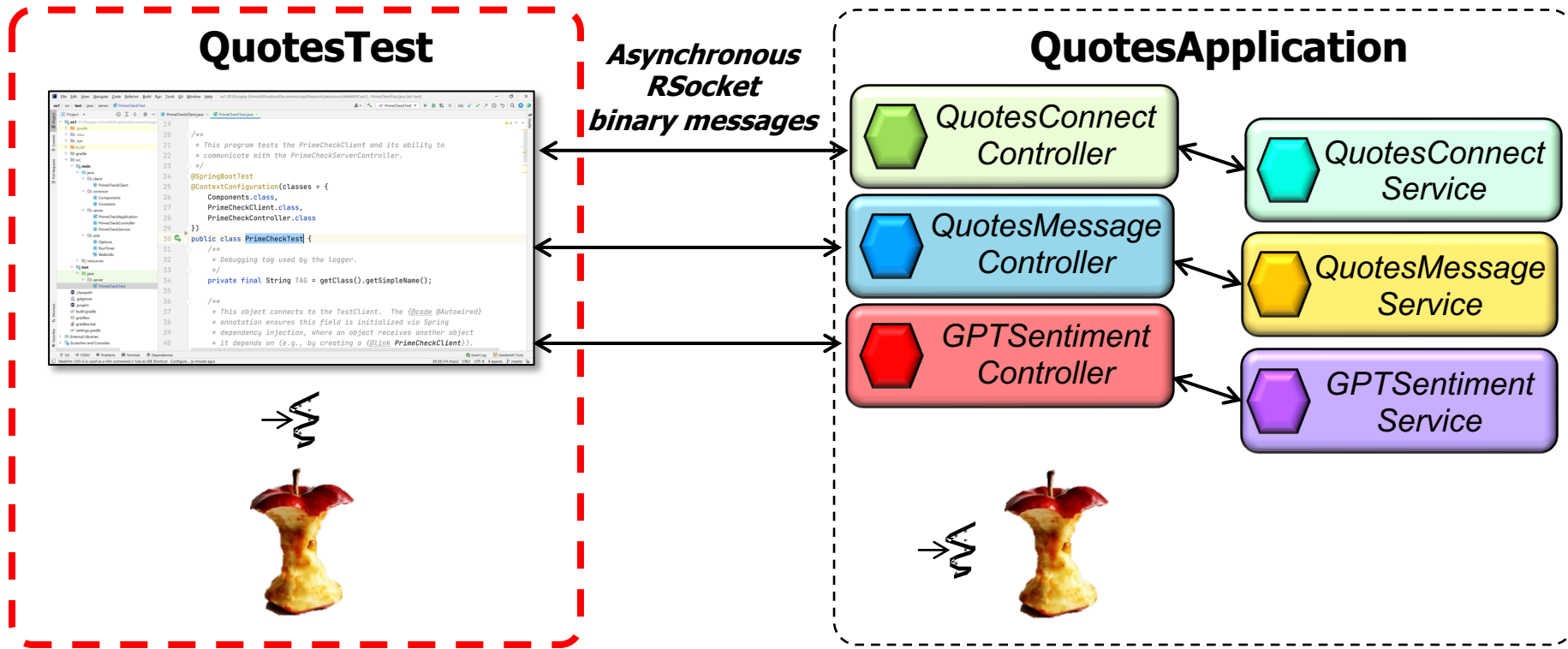
**Institute for Software  
Integrated Systems**

**Vanderbilt University  
Nashville, Tennessee, USA**



# Learning Objectives in this Part of the Lesson

- Understand the RSocket Shakespeare Quotes app test driver implementation, which connects & passes messages to the various controllers & services



---

# Implementing the RSocket Shakespeare Quotes App Test Driver

# Implementing the RSocket Shakespeare Quotes App Test Driver

The screenshot shows an IDE window with the following components:

- Project Explorer (Left):** Shows the project structure with folders like `repository`, `responder`, `connect`, `quoter`, `resources`, and `test`. The `test` folder is expanded to show `java` and `quotes` subfolders.
- Code Editor (Center):** Displays the `QuotesTest.java` file with the following code:

```
39 @SpringBootTest(classes = QuotesApplication.class,  
40     webEnvironment = SpringBootTest  
41     .WebEnvironment.DEFINED_PORT)  
42 @ComponentScan("quotes")  
43 public class QuotesTest {  
44     /**  
45      * Define the "command-line" options.  
46      */  
47     private static final String[] sArgv = new String[]{  
48         "-d", "false" // Enable/disable debugging.  
49     };  
50  
51     /**  
52      * Debugging tag used by Options.  
53      */  
54     private final String TAG = getClass().getSimpleName();  
55  
56     /**
```
- Bottom Panel:** Shows various IDE tools like Git, Run, CodeWhisperer, Logcat, Profiler, Build, Dependencies, TODO, Problems, Terminal, Services, and App Inspection. The status bar at the bottom indicates "Tests failed: 1, passed: 1 (a minute ago)" and "AWS: No credentials selected".

See [github.com/douglascraigshmidt/LiveLessons/tree/master/RSocket/ex3](https://github.com/douglascraigshmidt/LiveLessons/tree/master/RSocket/ex3)

---

# End of Implementing the RSocket Shakespeare Quotes Case Study App Test Driver