

Implementing the RSocket Shakespeare Quotes Case Study App Responder (Part 2)

Douglas C. Schmidt

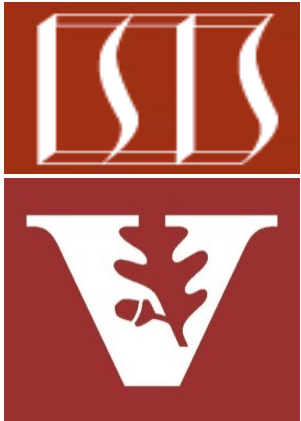
d.schmidt@vanderbilt.edu

www.dre.vanderbilt.edu/~schmidt

Professor of Computer Science

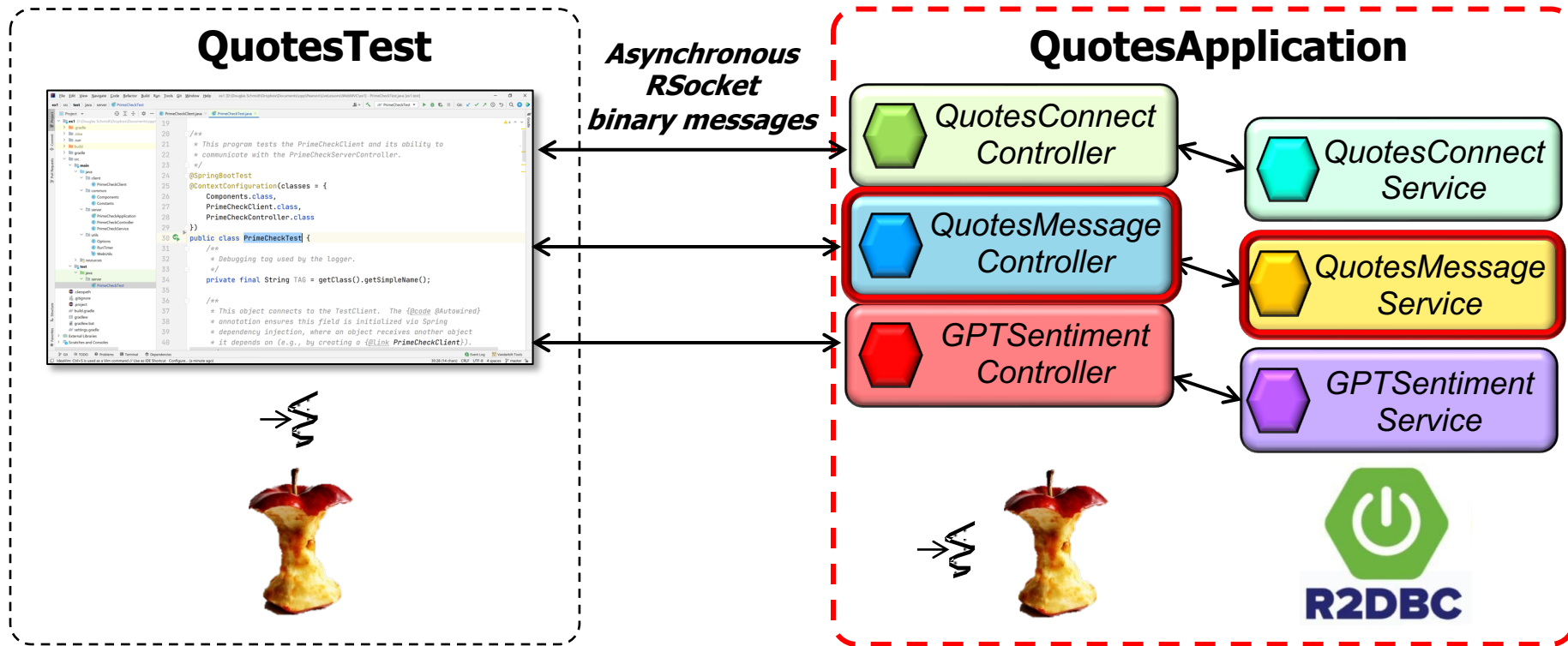
**Institute for Software
Integrated Systems**

**Vanderbilt University
Nashville, Tennessee, USA**



Learning Objectives in this Lesson

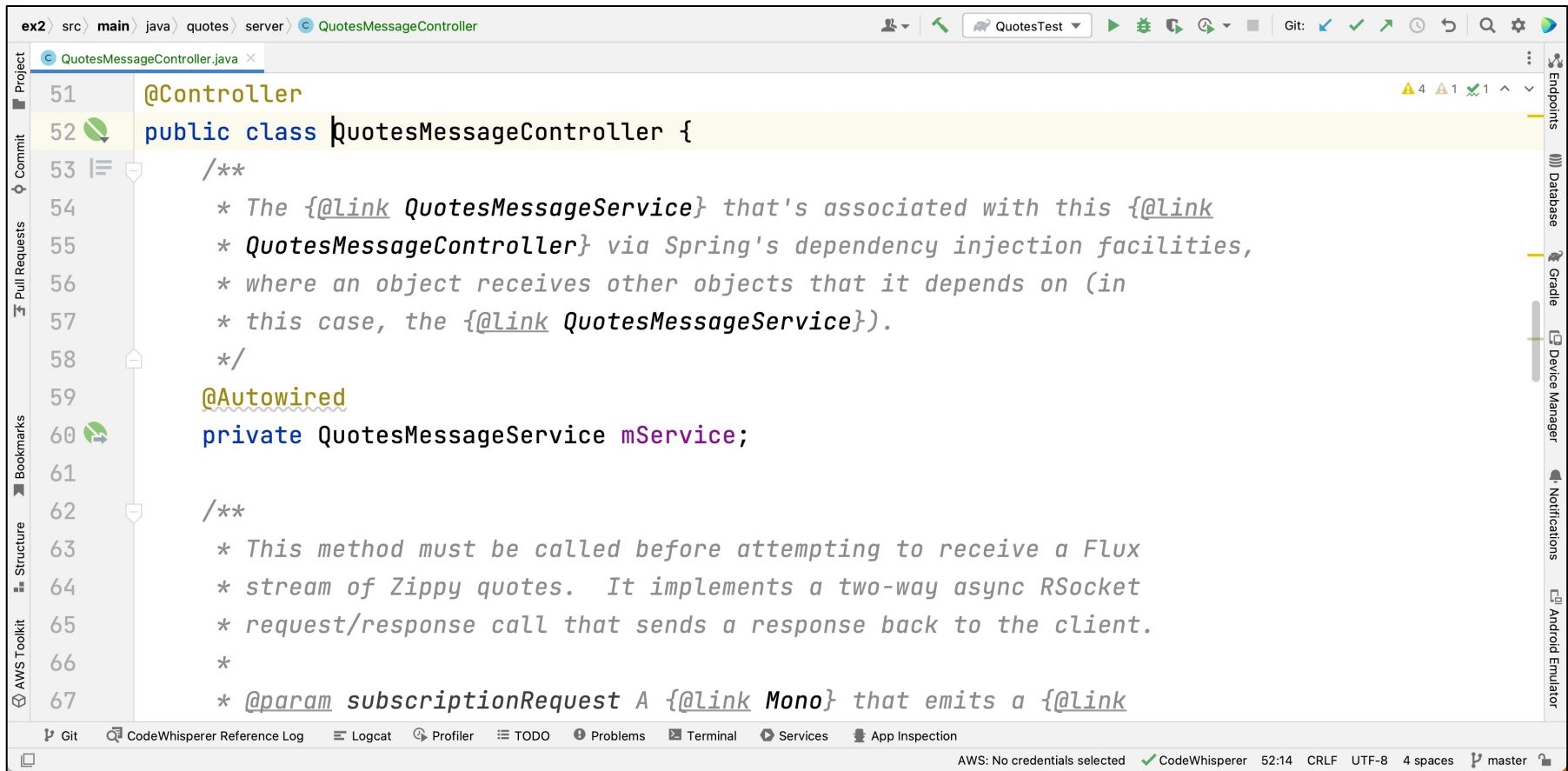
- Understand the implementation of the messaging portion of the RSocket Shakespeare Quotes app responder



Including the R2DBC reactive database used to access Shakespeare Quotes

Implementing the RSocket Shakespeare Quotes App Responder

Implementing the RSocket Shakespeare Quotes App Responder



The screenshot shows an IDE window with the following content:

```
ex2 | src | main | java | quotes | server | QuotesMessageController
QuotesMessageController.java x
51 @Controller
52 public class QuotesMessageController {
53     /**
54      * The {@link QuotesMessageService} that's associated with this {@link
55      * QuotesMessageController} via Spring's dependency injection facilities,
56      * where an object receives other objects that it depends on (in
57      * this case, the {@link QuotesMessageService}).
58      */
59     @Autowired
60     private QuotesMessageService mService;
61
62     /**
63      * This method must be called before attempting to receive a Flux
64      * stream of Zippy quotes. It implements a two-way async RSocket
65      * request/response call that sends a response back to the client.
66      *
67      * @param subscriptionRequest A {@link Mono} that emits a {@link
```

The IDE interface includes a sidebar on the left with icons for Project, Commit, Pull Requests, Bookmarks, Structure, and AWS Toolkit. On the right, there are icons for Endpoints, Database, Gradle, Device Manager, Notifications, and Android Emulator. The bottom status bar shows: AWS: No credentials selected, CodeWhisperer, 52:14, CRLF, UTF-8, 4 spaces, master.

See github.com/douglascraigshmidt/LiveLessons/tree/master/RSocket/ex3

End of Implementing the RSocket Shakespeare Quotes Case Study App Server (Part 2)